



# GAT MONTHLY MEMBERSHIP PROGRESS REPORT

Results as of: 3/31/2026

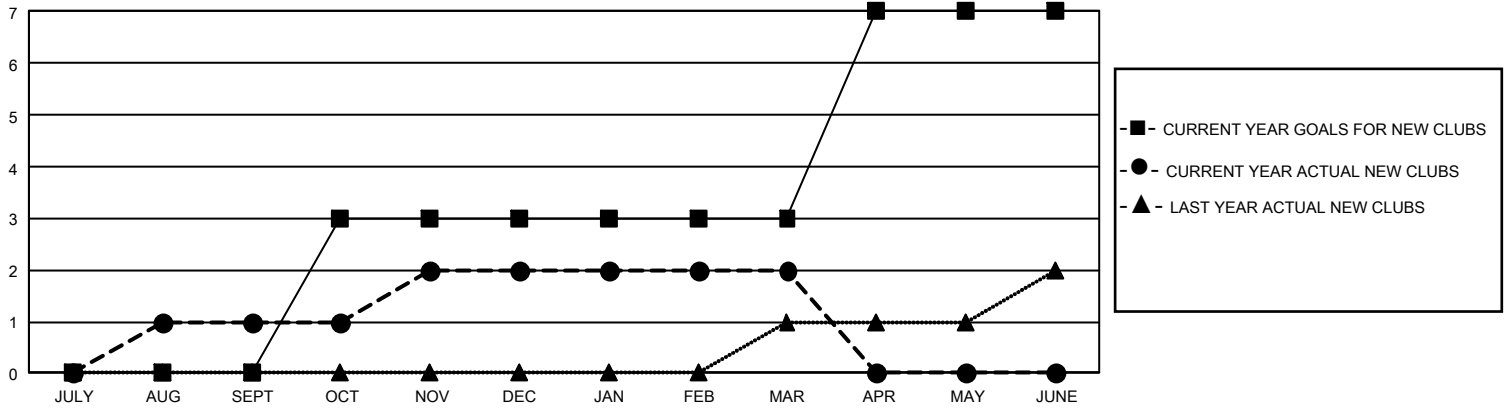
## GMT Constitutional Area 7, Group B

REPORT DOES NOT INCLUDE CLUBS IN UNDISTRICTED AREAS.

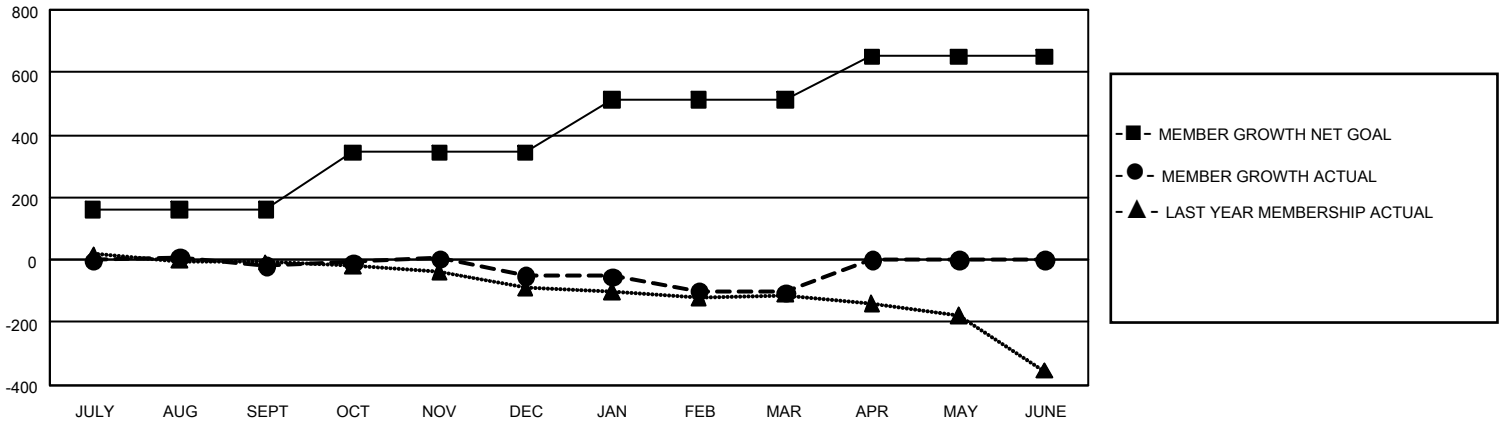
Clubs			
RESULTS FOR 2025-2026			
QUARTER	NEW CLUB GOAL	NEW CLUBS	DROPPED CLUBS
JULY/AUG/SEPT	0	1	4
OCT/NOV/DEC	9	1	2
JAN/FEB/MAR	0	0	0
APR/MAY/JUNE	12	0	0

Members			
RESULTS FOR 2025-2026			
QUARTER	MEMBER GROWTH NET GOAL	MEMBER GROWTH ACTUAL	DROPPED MEMBERS ACTUAL (including transfers)
JULY/AUG/SEPT	162	219	207
OCT/NOV/DEC	182	209	222
JAN/FEB/MAR	168	156	173
APR/MAY/JUNE	139	0	0

GOALS AND ACTUAL NEW CLUBS CUMULATIVE



GOALS AND ACTUAL MEMBERS CUMULATIVE



<b>DROPPED CLUBS: 6</b>	175 CLUBS OF 287 ADDED 1 OR MORE NEW MEMBERS	<b><u>GENDER DISTRIBUTION</u></b>	
		MALE 4,831 (65.63%) FEMALE 2,526 (34.32%) NON BINARY 2 (0.03%) PREFER NOT TO ANSWER 2 (0.03%)	
<b><u>DROPPED MEMBERS</u></b>		<a href="#">CLICK HERE FOR CUMULATIVE MEMBERSHIP DATA</a>	TOTAL FAMILY UNIT MEMBERS 761
DECEASED 82 CLUB CANCELLED 20 OTHER 498 <b>TOTAL 600</b>			FAMILY MEMBERS PAYING HALF DUES 382